



Brian K. Frazier
County Surveyor
County of El Dorado
360 Fair Lane, Placerville, CA 95667
Phone: (530)621-5440
e-mail: surveyor@edcgov.us

OFFICIAL NOTIFICATION OF SITUS ADDRESS

December 9, 2024

To Whom It May Concern:

Assessor's Parcel Number 120-690-011 has been officially assigned the situs address of:

8105 Saratoga Way, Suite #'s: 110, 120, 125, 130, 210, 220, 230, and 240

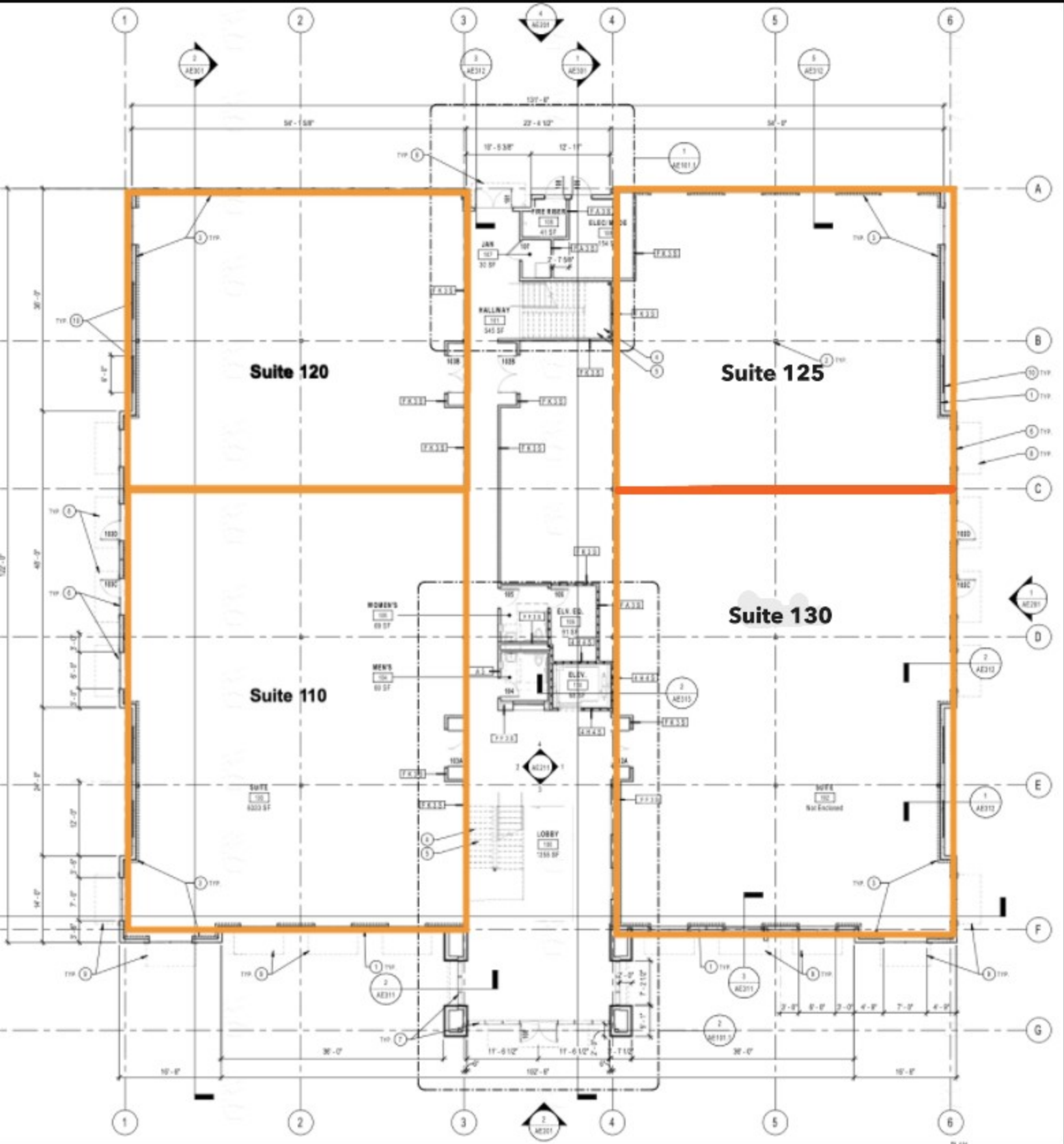
If you have any questions, please contact the Surveyor's Office at 530-621-5440 or surveyor@edcgov.us

Regards,

Jane McClusky

Jane McClusky
GIS Analyst
Surveyor's Office
El Dorado County

Please note that it is your responsibility to update all your mailing address contacts.



Suite 220

Suite 230

Suite 210

Suite 240

SUITE
202
6471 SF

MEN'S
204
59 SF

WOMEN'S
205
60 SF

ELEV.
208
87 SF

ELEC
207
47 SF

JAN
206
48 SF

HALLWAY
200
1453 SF

SUITE
111
Not Enclosed

CONFERENCE

FK 3 S

FK 3 S

FK 3 S

FA 3 S

FK 3 S

FK 3 S

FK 3 S

FA 3 S

FA 3 S

FK 3 S

FK 3 S

FK 3 S

FK 3 S

FK 3 S

FK 3 S

FK 3 S

FK 3 S

FK 3 S

FA 3 S

FA 3 S

W

FF 3 S

FA 3 S

FF 3 S

DUCT ENCLOSURE

ELEV.

1'-7 1/2"

1'-7 1/4"

209

208

200

203

1
AE102.1

14 TYP.
3 TYP.

2
AE312

1
AE312

3
AE301

9 TYP.

4 TYP.

3

14 TYP.

9 TYP.

1
AE102.1

10

11 TYP.

8 TYP.

4 TYP.

14 TYP.

3 TYP.

7 TYP.

2
AE312

1
AE312

9 TYP.

9 TYP.

3
AE301